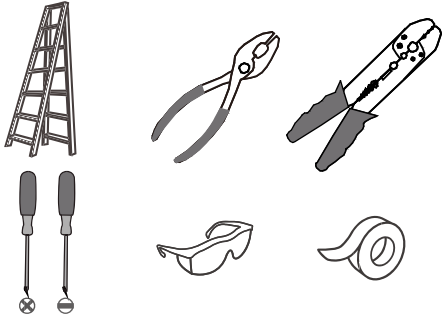
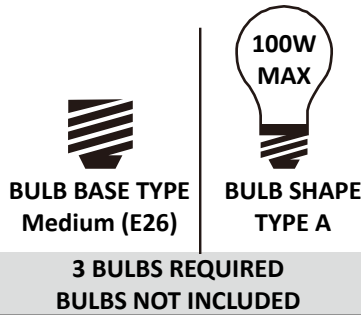


Tools Required



Light Source



Warnings and Cautions

Turn off the electricity at the circuit breaker before installation. Consult a licensed electrician if in doubt about installation.

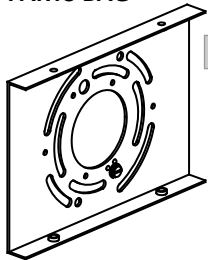
Turn off power to the fixture and allow the bulbs to cool before replacing.

Package Contents

Preparation: Identify and inspect all parts before beginning the installation.

Missing or damaged parts? Contact your original place of purchase.

PARTS BAG



- A** Inner Backplate x 1
- B** Mounting Screw x 4
- C** Outlet Box Screw x 2
- D** Wire Connector x 3

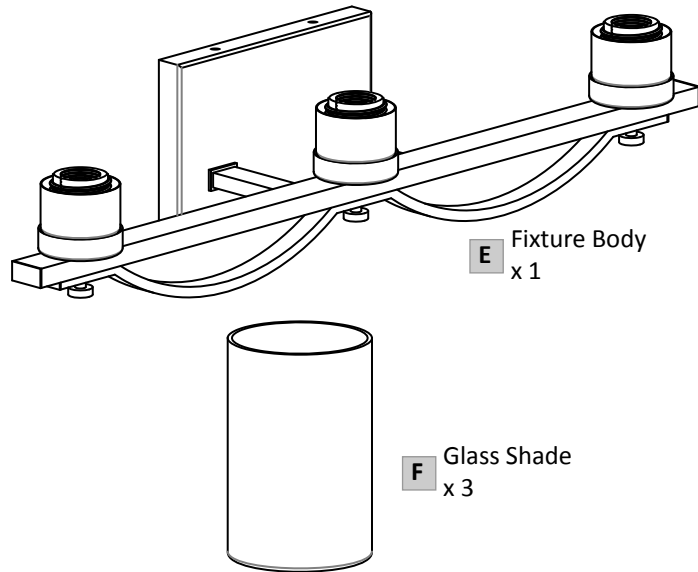
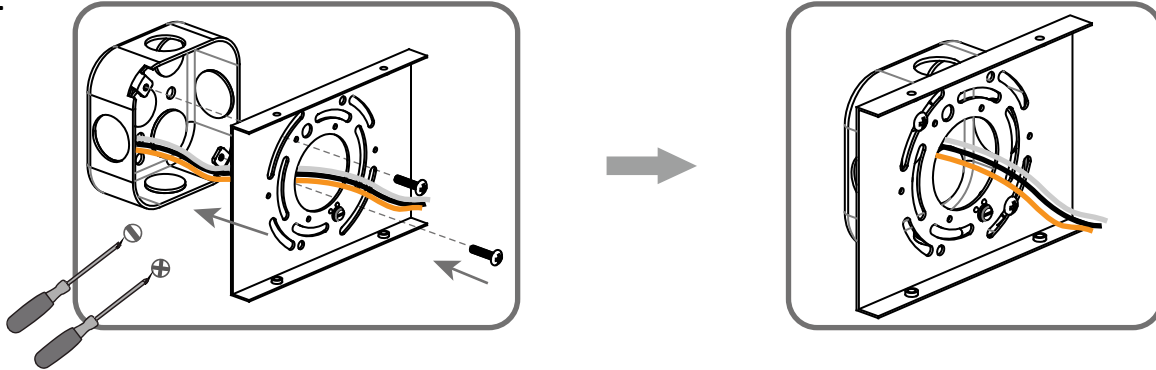


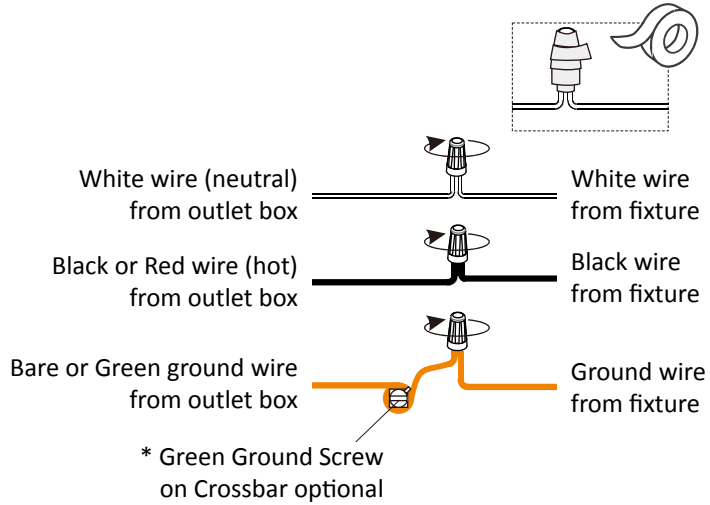
Table of Contents

| Crossbar | Wiring | Fixture Body | Glass Shade & Bulb |
|---------------|---------------|---------------|--------------------|
| | | | |
| STEP 1 | STEP 2 | STEP 3 | STEP 4 |

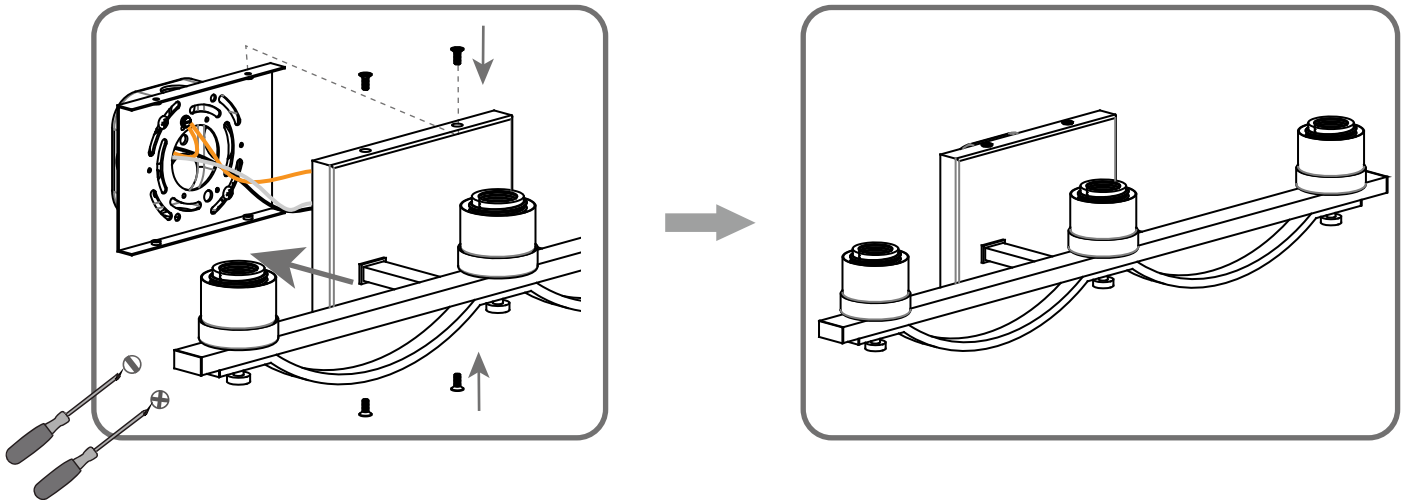
STEP 1



STEP 2



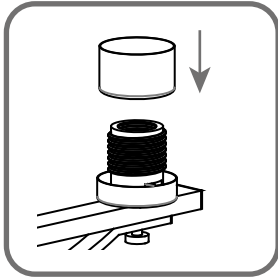
STEP 3



STEP 4

1

Remove socket collar



2

Install glass shade and bulb

