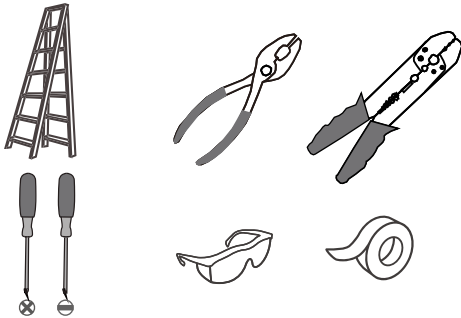
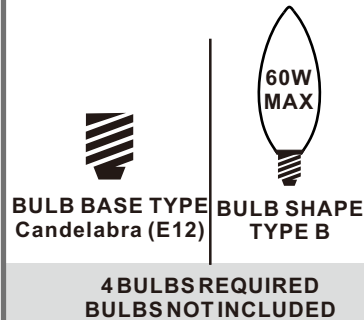


Tools Required



Light Source



Fixture Height Adjustable 27.5" to 63.5"

⚠ Warnings and Cautions

Turn off the electricity at the circuit breaker before installation. Consult a licensed electrician if in doubt about installation.

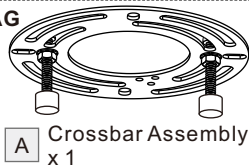
Turn off power to the fixture and allow the bulbs to cool before replacing.

Package Contents

Preparation: Identify and inspect all parts before beginning the installation.

Missing or damaged parts? Contact your original place of purchase.

PARTS BAG



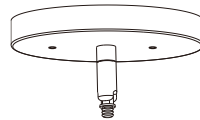
A Crossbar Assembly x 1



B Outlet Box Screw x 2



C Wire Connector x 3



D Ceiling Canopy x 1



E 6" L Rod x 2



F 12" L Rod x 2



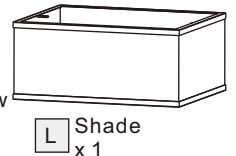
I Cup x 1



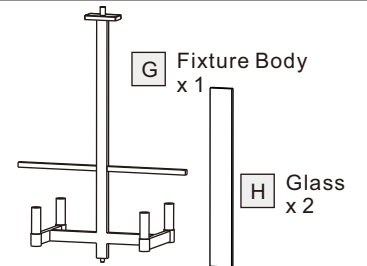
J Finial x 1



K Lock Screw x 2



L Shade x 1

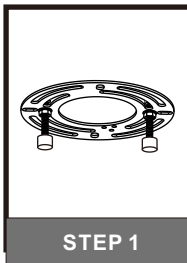


G Fixture Body x 1

H Glass x 2

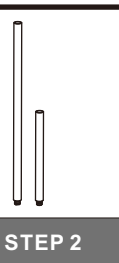
Table of Contents

Crossbar Assembly



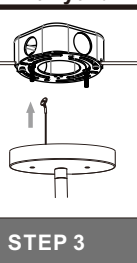
STEP 1

Downrod



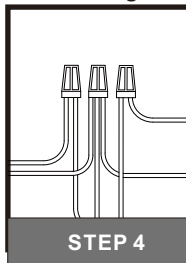
STEP 2

Lanyard



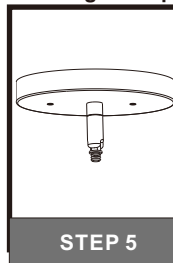
STEP 3

Wiring



STEP 4

Ceiling Canopy



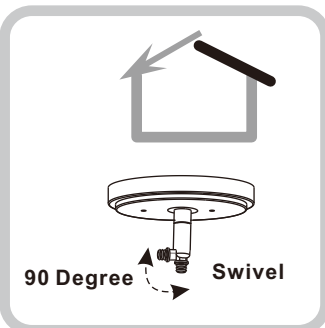
STEP 5

Bulb



STEP 6

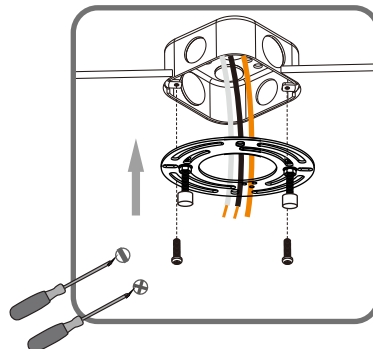
STEP 1



For angled ceilings,
Swivel opening towards wall.

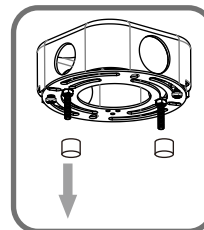
1

Step 1
Install crossbar assembly

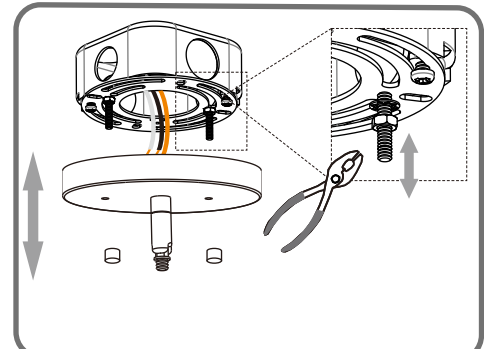


2

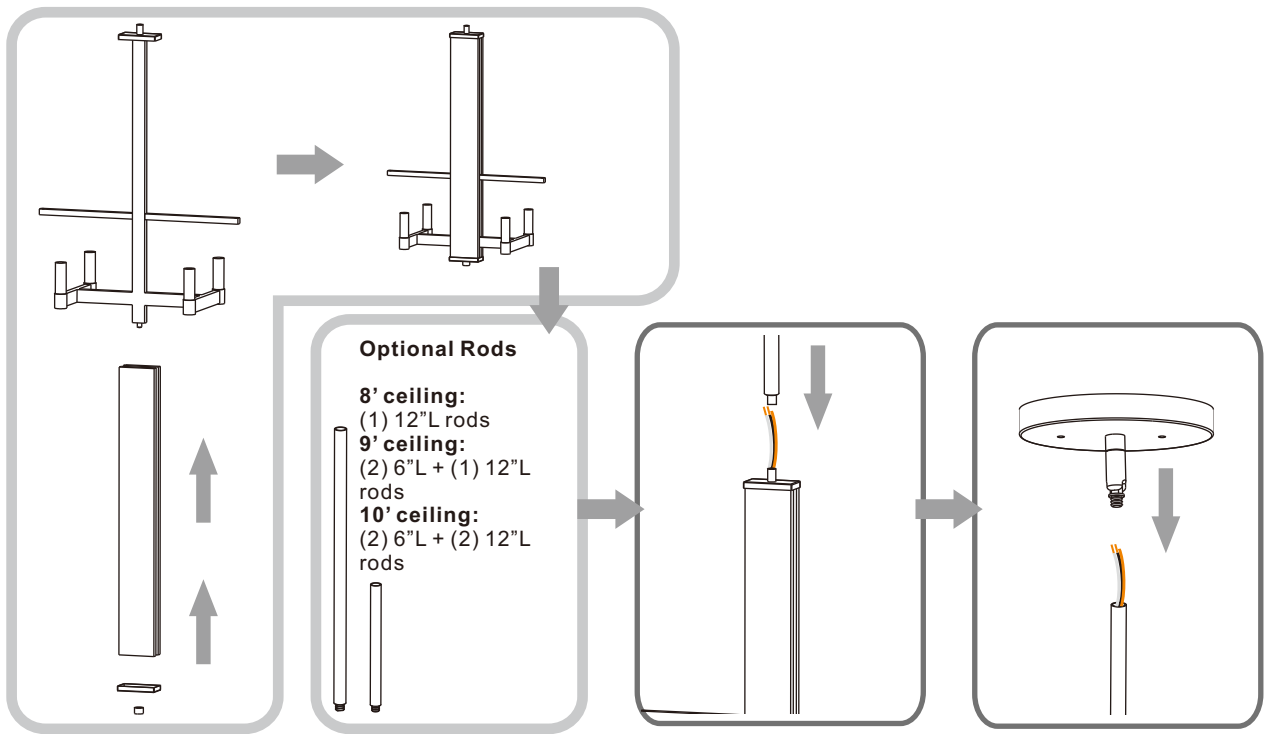
Step 2 - 3
Test fitting ceiling canopy to mounting screws



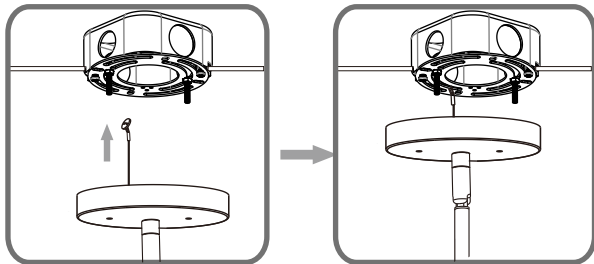
3



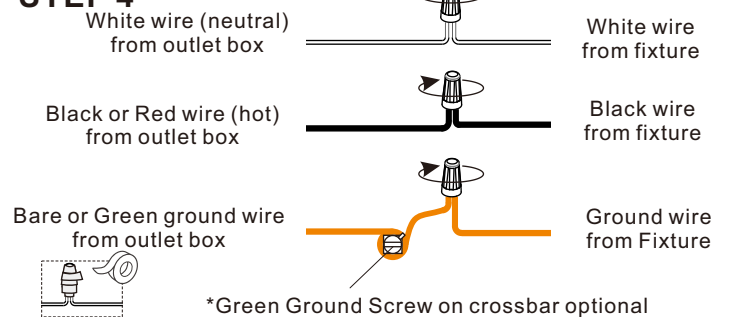
STEP 2



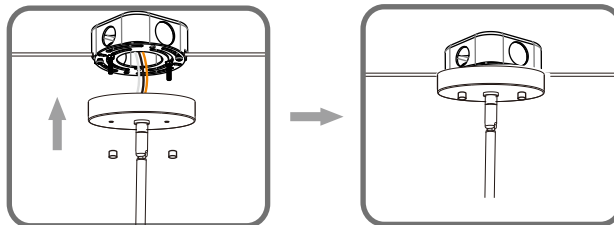
STEP 3



STEP 4



STEP 5



STEP 6

