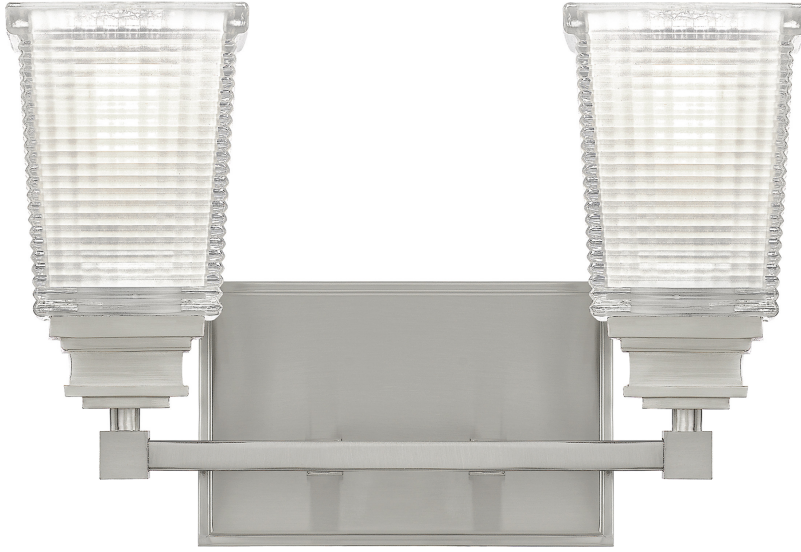


--



## DIMENSIONS

Dimensions: 14.00" W x 8.75" H x 5.50" D

Backplate Dimensions: 4.50"H x 7.00"W

HCWO: 6.5"

## DETAILS

Material: Steel

Glass/Shade Description: Clear Prismatic  
Glass w/Etched Interior

## LAMPING

Light Source: Incandescent

Bulb Included: No

Bulb Type: Medium Base

Bulb Quantity: 2

Watts per Bulb: 100

## ELECTRICAL

Dimmable: Yes

Voltage: 120v

Wire Length: 0.5'

## INSTALLATION

Location Rating: Damp

Install Position: Up/Down

We reserve the right to revise the design of components of any product due to parts availability or change in our Listed Mark standards without assuming any obligation or liability to modify any products previously manufactured and without notice. This literature depicts a product DESIGN that is the SOLE and EXCLUSIVE PROPERTY of Quozel Inc. Compliance with U.S. COPYRIGHT and PATENT requirements, notification is hereby presented in this form that this literature, or this product depicts, is NOT to be copied, altered or used in any manner without the express written consent of, or contrary to the best interests of Quozel Inc. 03/31/2013