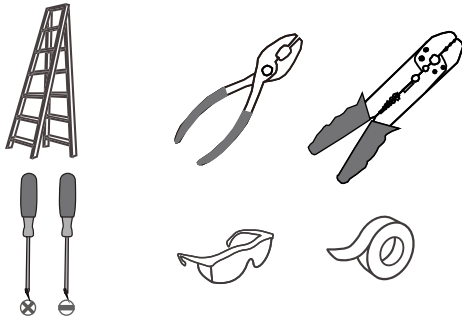
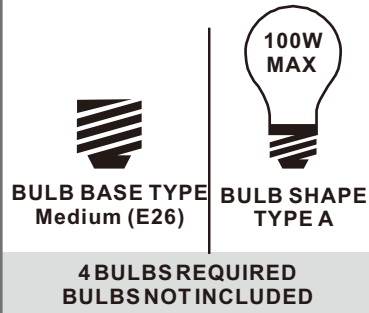


**Tools Required**



**Light Source**



**Fixture Height Adjustable 13.75" to 49.75"**

**Warnings and Cautions**

Turn off the electricity at the circuit breaker before installation. Consult a licensed electrician if in doubt about installation.

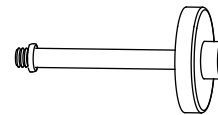
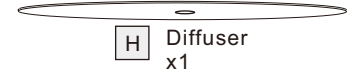
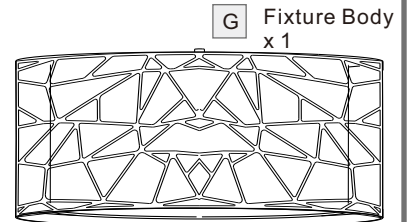
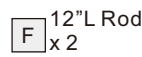
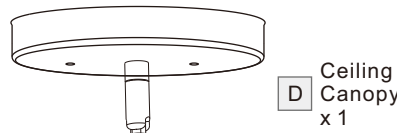
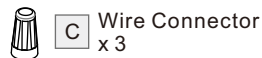
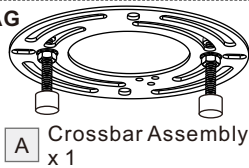
Turn off power to the fixture and allow the bulbs to cool before replacing.

**Package Contents**

**Preparation:** Identify and inspect all parts before beginning the installation.

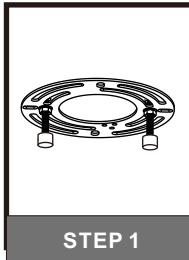
Missing or damaged parts? Contact your original place of purchase.

**PARTS BAG**



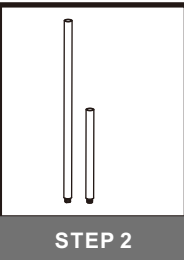
**Table of Contents**

**Crossbar Assembly**



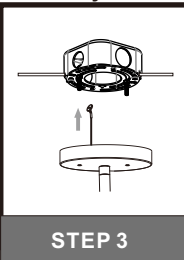
STEP 1

**Downrod**



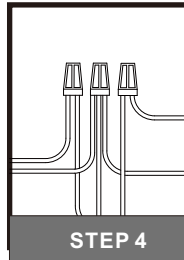
STEP 2

**Lanyard**



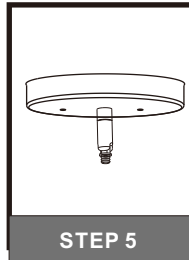
STEP 3

**Wiring**



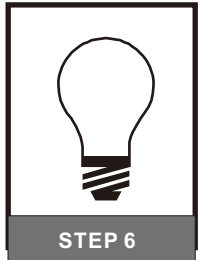
STEP 4

**Ceiling Canopy**



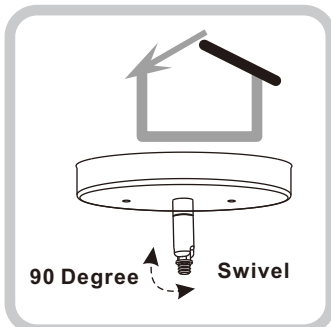
STEP 5

**Bulb and Diffuser**



STEP 6

**STEP 1**

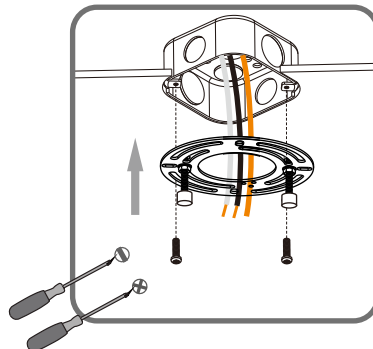


90 Degree Swivel

For angled ceilings, Swivel opening towards wall.

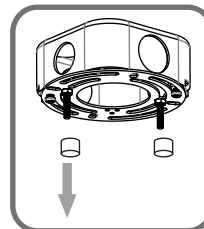
1

Step 1  
Install crossbar assembly

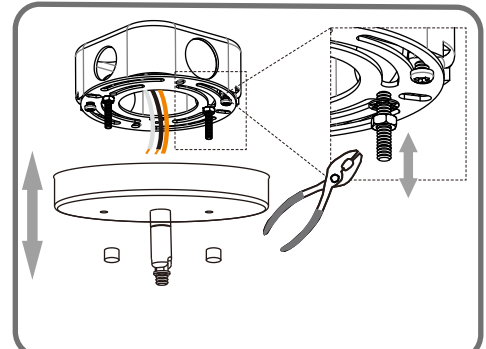


2

Step 2 - 3  
Test fitting ceiling canopy to mounting screws



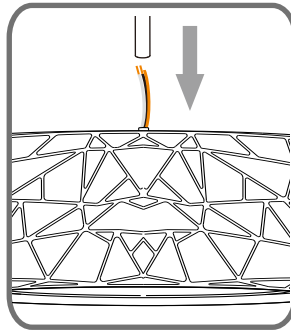
3



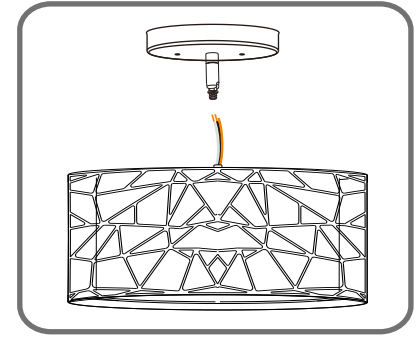
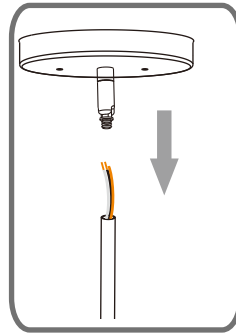
## STEP 2

### Optional Rods

- 8' ceiling:  
(2) 6"L rods
- 9' ceiling:  
(2) 6"L + (1) 12"L rods
- 10' ceiling:  
(2) 6"L + (2) 12"L rods

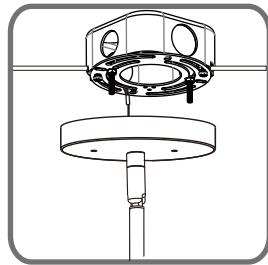
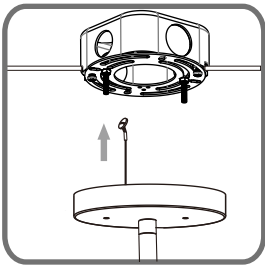


OPTION 1



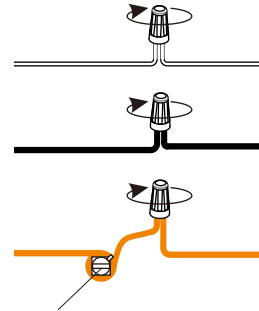
OPTION 2

## STEP 3



## STEP 4

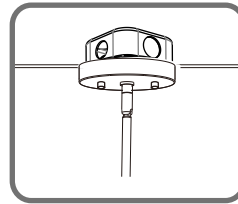
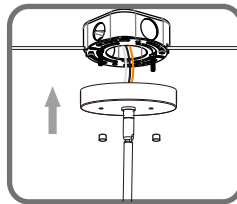
- White wire (neutral)  
from outlet box
- Black or Red wire (hot)  
from outlet box
- Bare or Green ground wire  
from outlet box



- White wire  
from fixture
- Black wire  
from fixture
- Ground wire  
from Fixture

\*Green Ground Screw on crossbar optional

## STEP 5



## STEP 6

1

2

3

