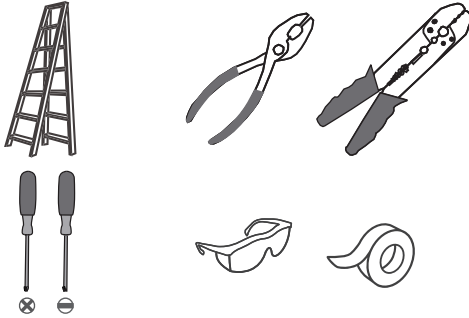
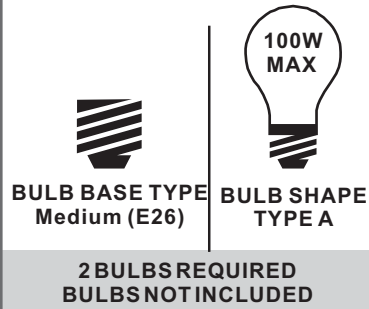


**Tools Required**



**Light Source**



**Warnings and Cautions**

Turn off the electricity at the circuit breaker before installation. Consult a licensed electrician if in doubt about installation.

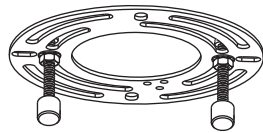
Turn off power to the fixture and allow the bulbs to cool before replacing.

**Package Contents**

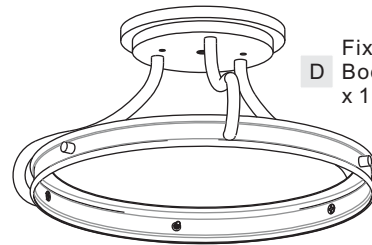
**Preparation:** Identify and inspect all parts before beginning the installation.

Missing or damaged parts? Contact your original place of purchase.

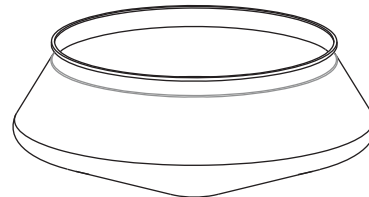
**PARTS BAG**



- A** Crossbar Assembly x 1
- B** Outlet Box Screw x 2
- C** Wire Connector x 3



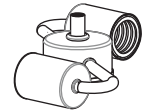
**D** Fixture Body x 1



**E** Shade x 1



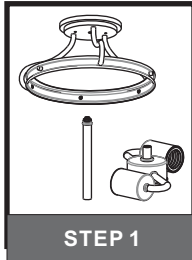
**F** Stem Assembly x 1



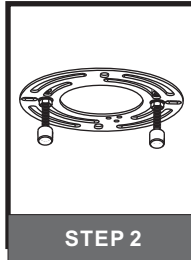
**G** Socket Assembly x 1

**Table of Contents**

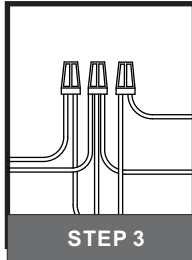
**Socket Assembly, Stem Assembly & Fixture Body**



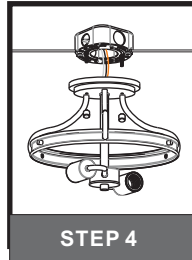
**Crossbar Assembly**



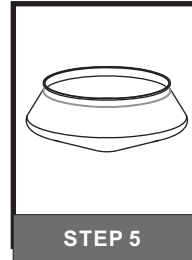
**Wiring**



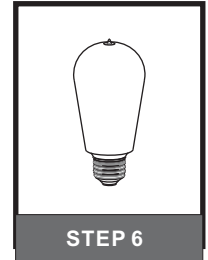
**Fixture Body**



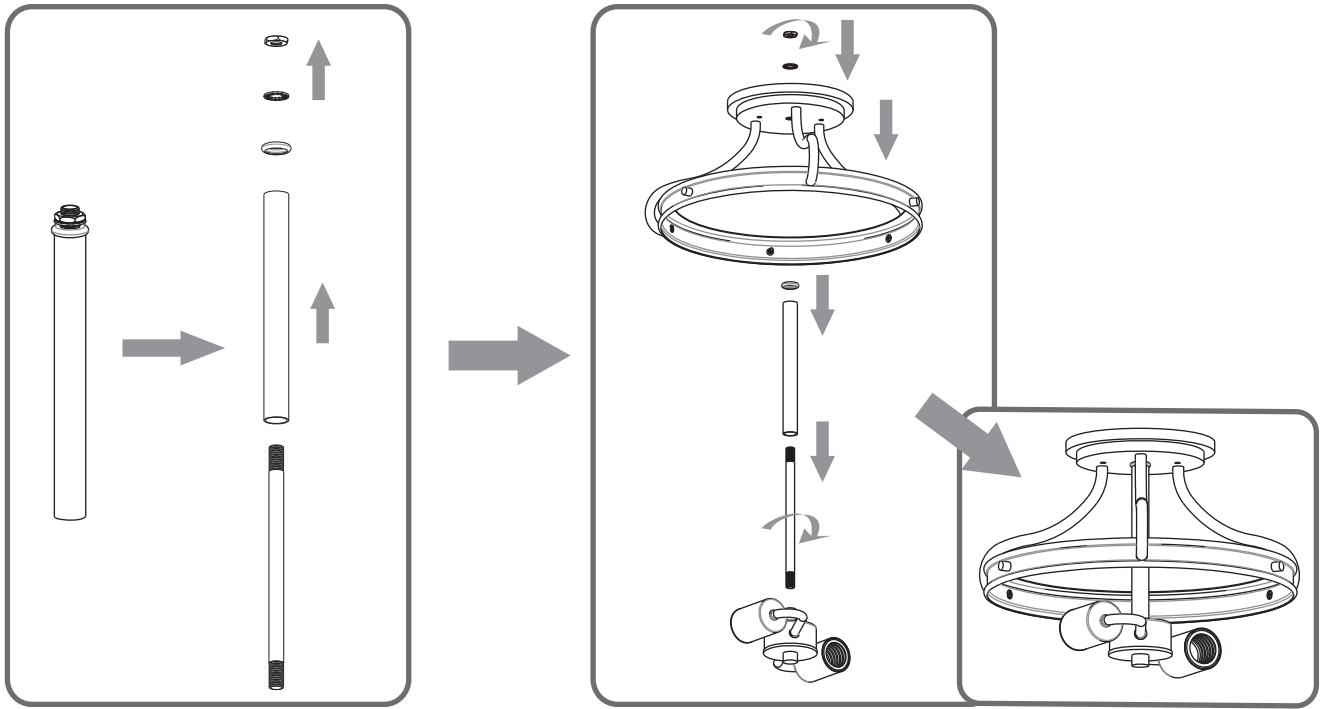
**Shade**



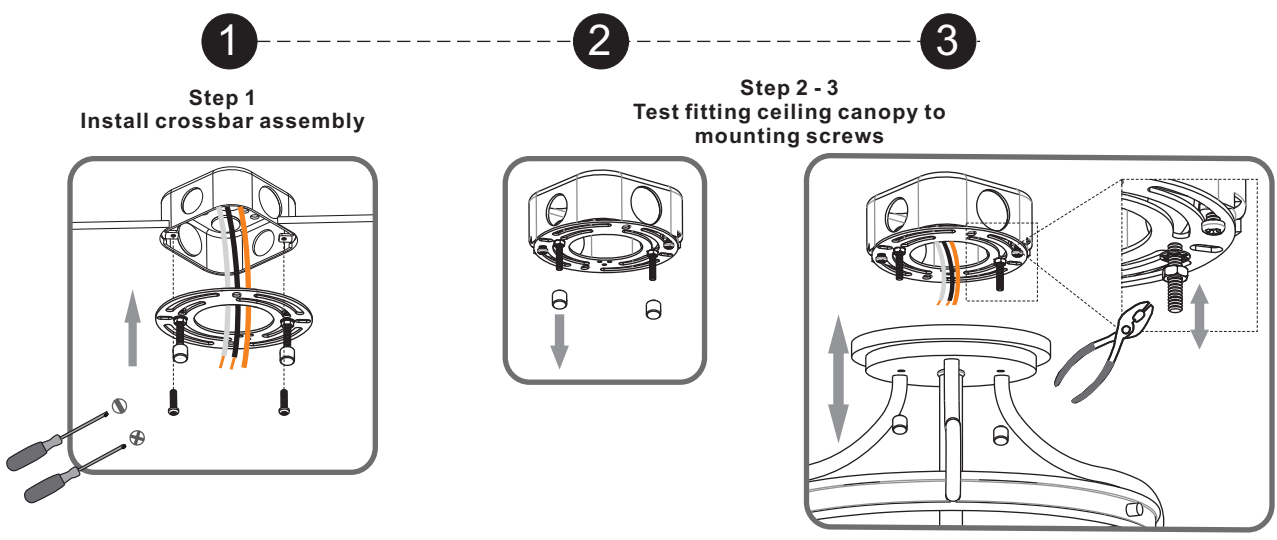
**Bulbs**



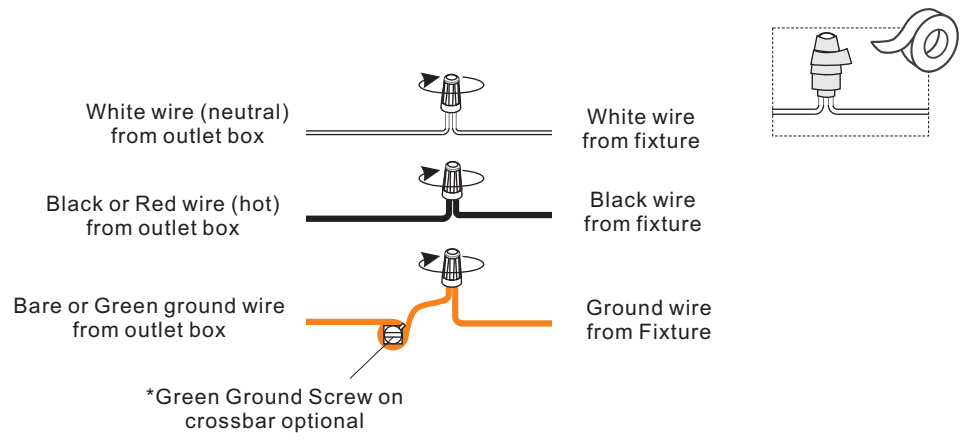
**STEP 1**



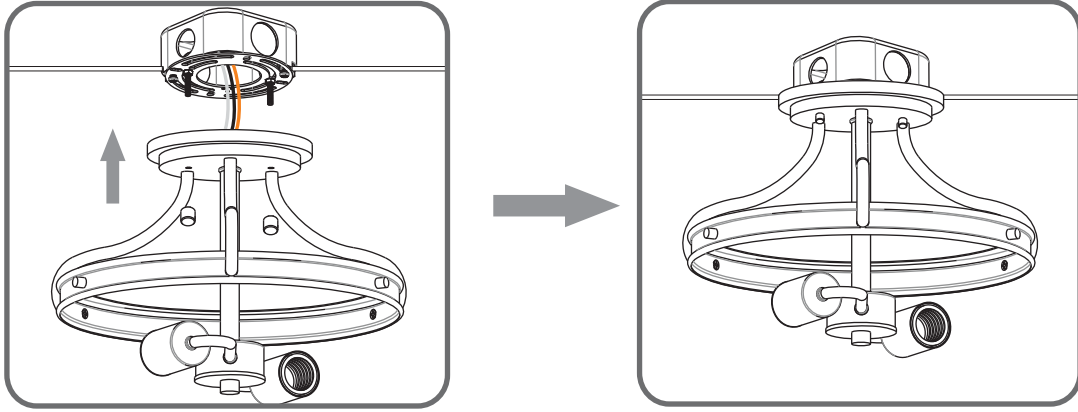
**STEP 2**



**STEP 3**



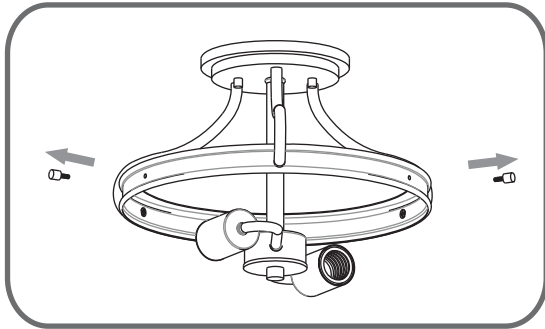
**STEP 4**



**STEP 5**

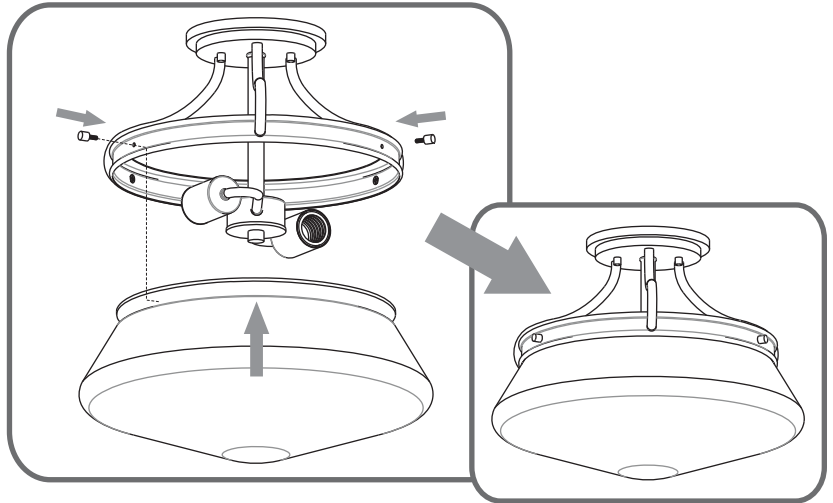
1

Remove Lock Screws



2

Install Shade



**STEP 6**

