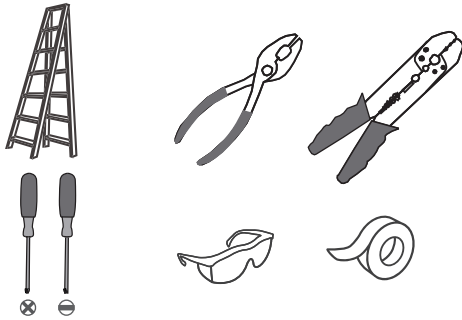


Tools Required



Light Source

30W
LED

**Fixture Height Adjustable
10" to 99.5"**

⚠ Warnings and Cautions

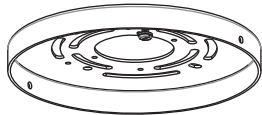
Turn off the electricity at the circuit breaker before installation. Consult a licensed electrician if in doubt about installation.

Package Contents

Preparation: Identify and inspect all parts before beginning the installation.

Missing or damaged parts? Contact your original place of purchase.

PARTS BAG



A Inner Backplate
x 1

B Lock Screw
x 2

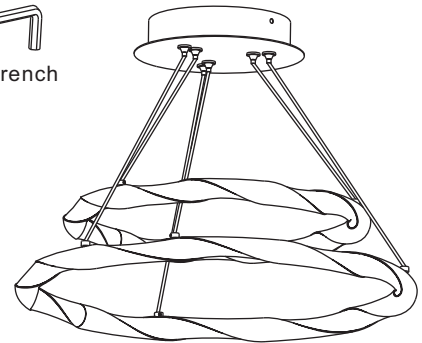


C Outlet Box Screw
x 2



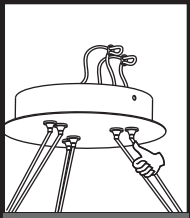
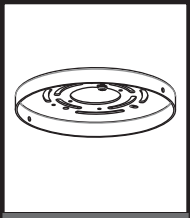
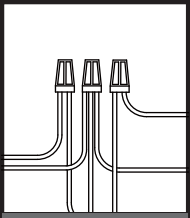
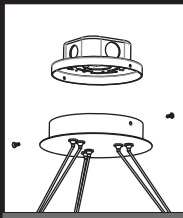
D Wire Connector
x 3

E Allen Wrench
x 1



F Fixture Body
x 1

Table of Contents

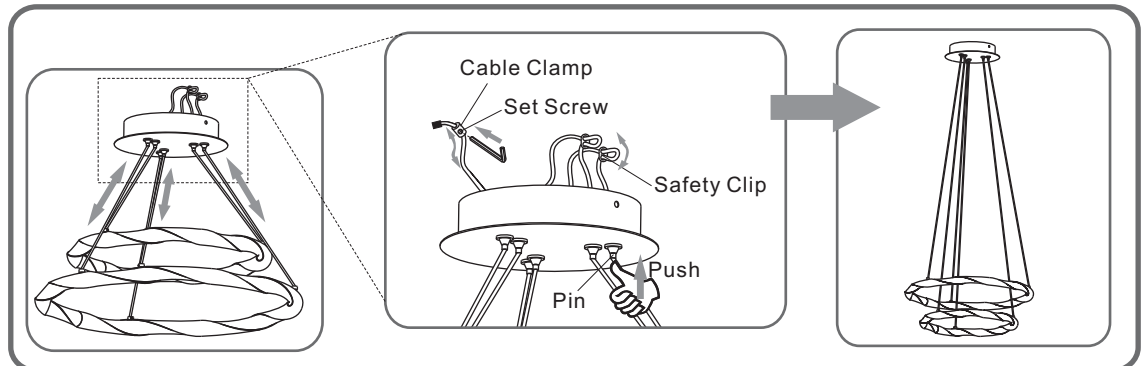
Adjust Cord Length	Inner Backplate	Wiring	Fixture Body
			
STEP 1	STEP 2	STEP 3	STEP 4

STEP 1

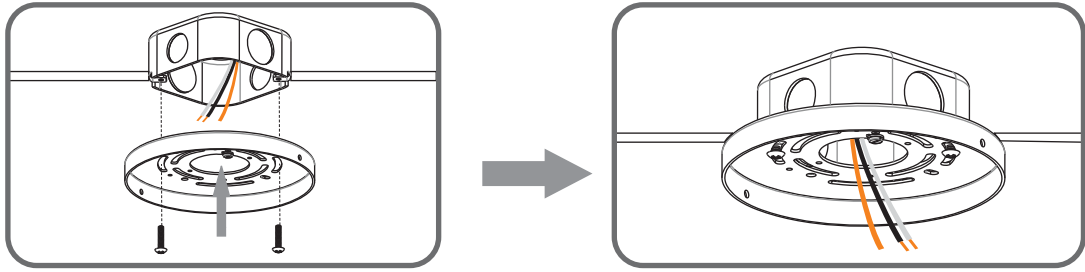
Option 1: Semi-Flush

→ skip to next page

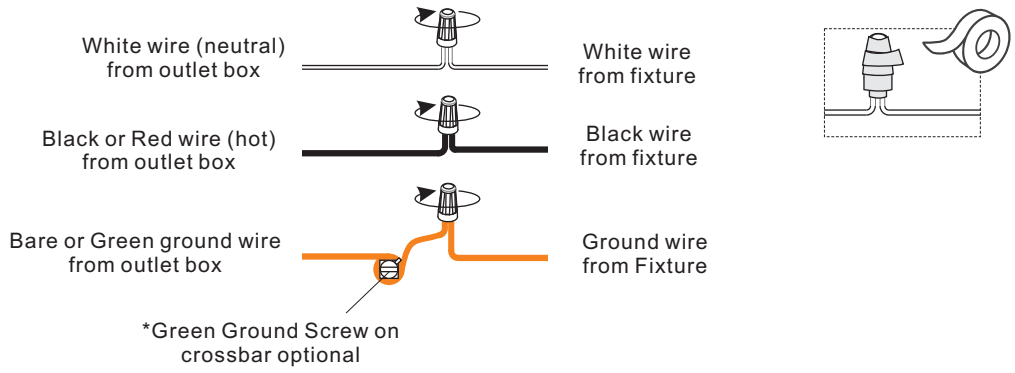
Option 2: Pendant



STEP 2



STEP 3



STEP 4

OPTION 1

OPTION 2

