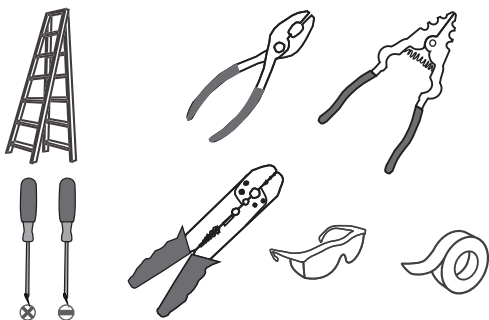
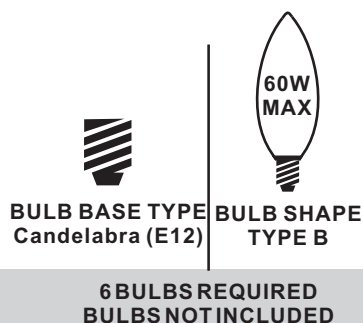


### Tools Required



### Light Source



### Fixture Height Adjustable 27.5" to 75.5"

#### ⚠ Warnings and Cautions

Turn off the electricity at the circuit breaker before installation. Consult a licensed electrician if in doubt about installation.

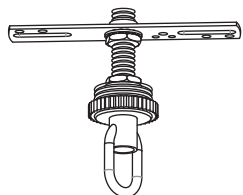
Turn off power to the fixture and allow the bulbs to cool before replacing.

### Package Contents

**Preparation:** Identify and inspect all parts before beginning the installation.

Missing or damaged parts? Contact your original place of purchase.

#### PARTS BAG



**A** Crossbar Assembly  
x 1



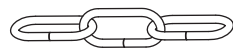
**B** Outlet Box Screw  
x 2



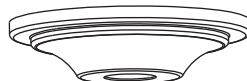
**C** Wire Connector  
x 3



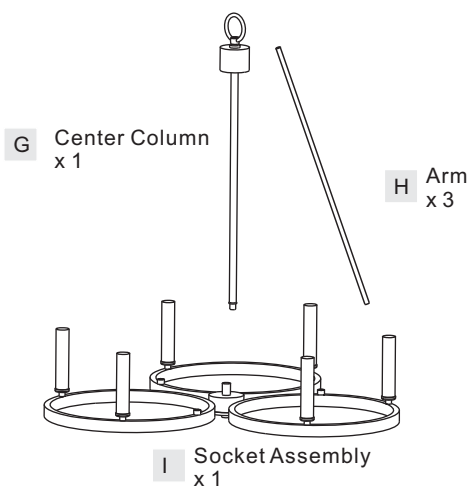
**D** Quick Link  
x 2



**E** Fixture Chain  
x 1



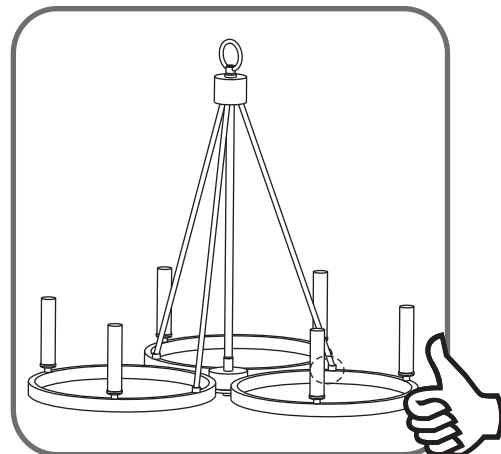
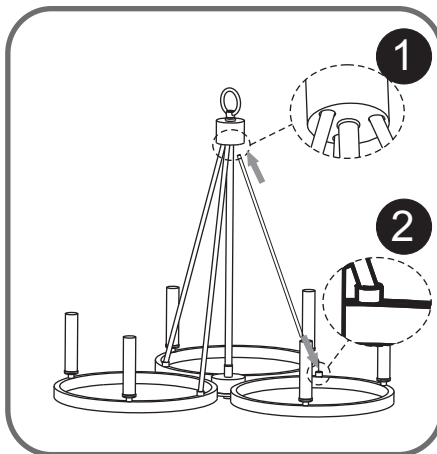
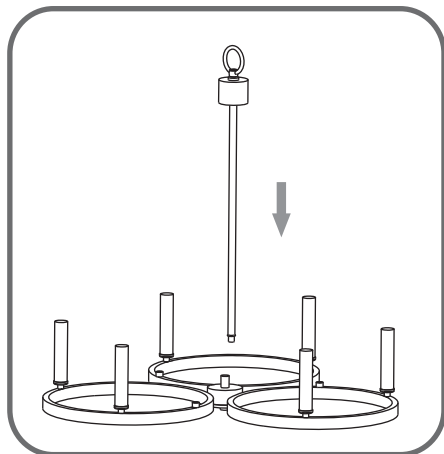
**F** Ceiling Canopy  
x 1



### Table of Contents

Center Column	Crossbar Assembly	Fixture Chain	Wiring	Ceiling Canopy	Bulb
STEP 1	STEP 2	STEP 3	STEP 4	STEP 5	STEP 6

## STEP 1



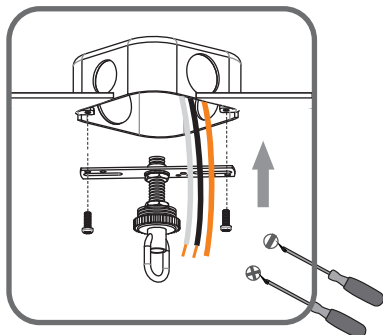
## STEP 2

1

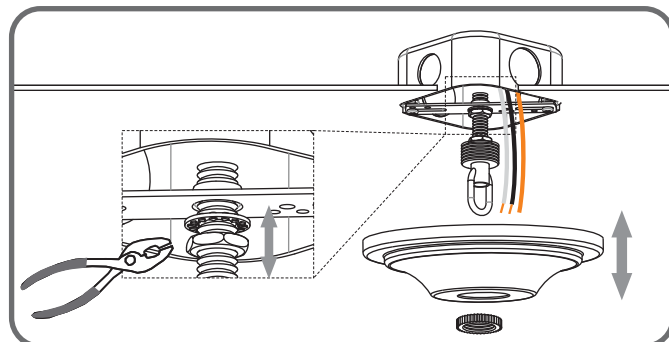
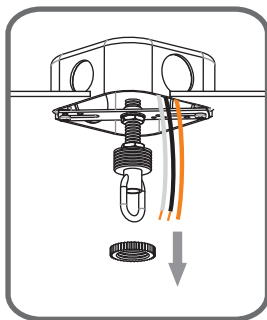
2

3

**Step 1**  
Install crossbar assembly



**Step 2 - 3**  
Test fitting ceiling canopy to nipple



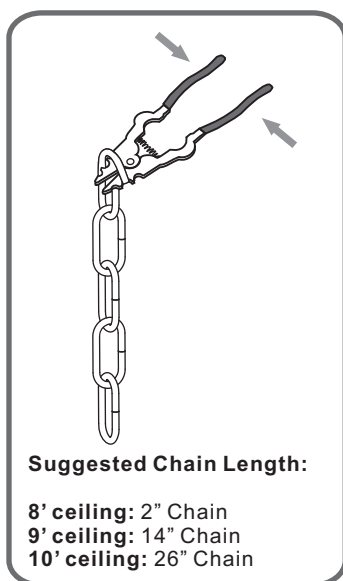
## STEP 3

1

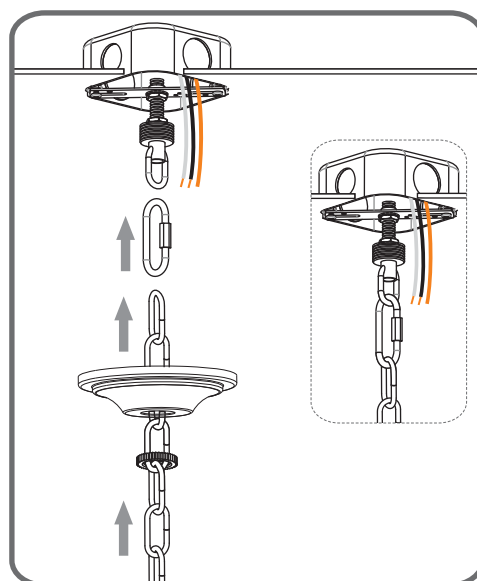
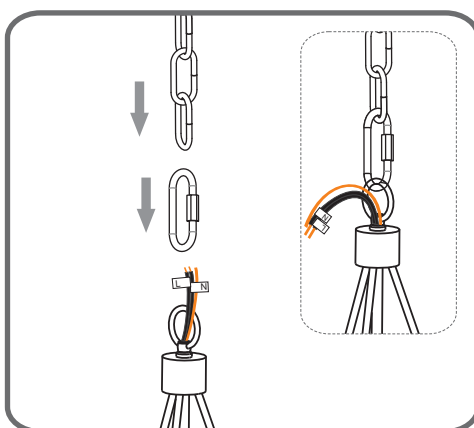
2

3

**Step 1**  
Adjust fixture chain length



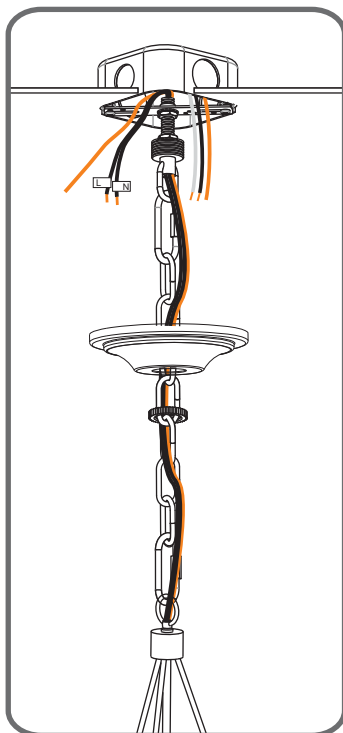
**Step 2 - 3**  
Install Fixture Chain



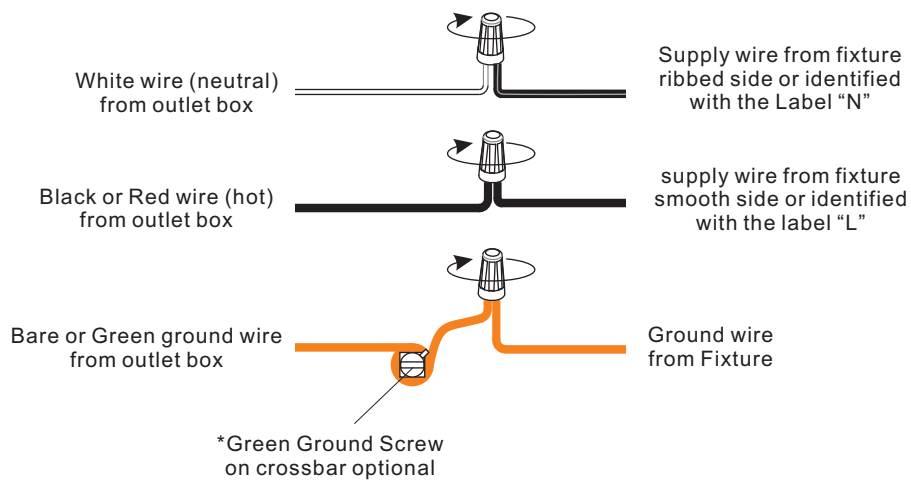
## STEP 4

1

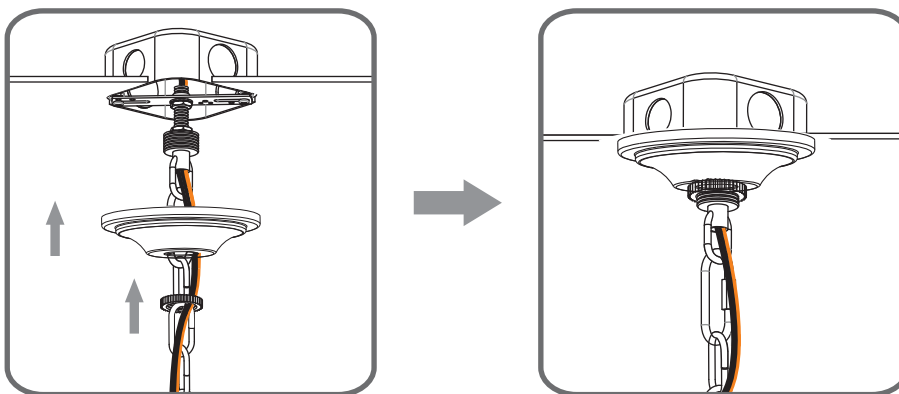
**Step 1**  
**Feed the fixture wires**  
**through the loop**



2



## STEP 5



## STEP 6

