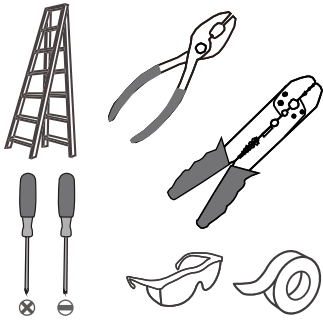
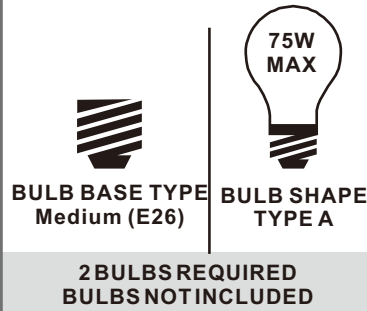


Tools Required



Light Source



Warnings and Cautions

Turn off the electricity at the circuit breaker before installation. Consult a licensed electrician if in doubt about installation.

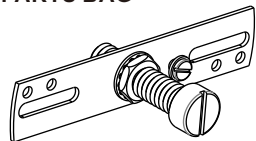
Turn off power to the fixture and allow the bulbs to cool before replacing.

Package Contents

Preparation: Identify and inspect all parts before beginning the installation.

Missing or damaged parts? Contact your original place of purchase.

PARTS BAG



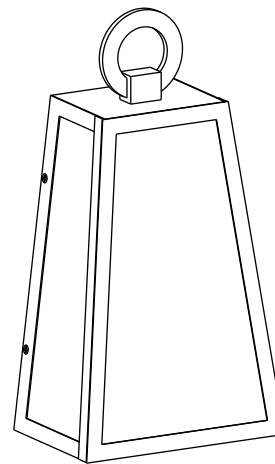
A Crossbar Assembly
x 1



B Outlet Box Screw
x 2



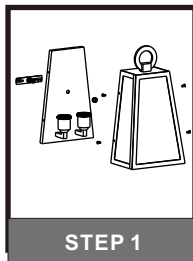
C Wire Connector
x 3



D Fixture Body
x 1

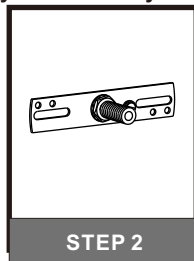
Table of Contents

Remove styrofoam & crossbar assembly



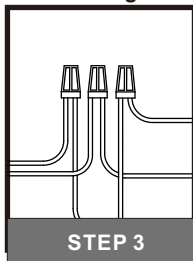
STEP 1

Crossbar Assembly



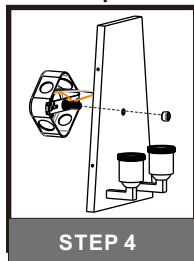
STEP 2

Wiring



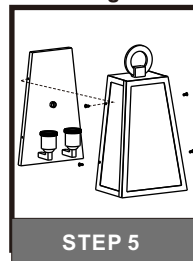
STEP 3

Backplate



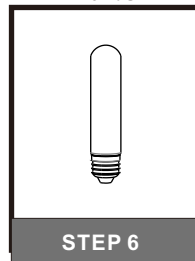
STEP 4

Cage



STEP 5

Bulbs

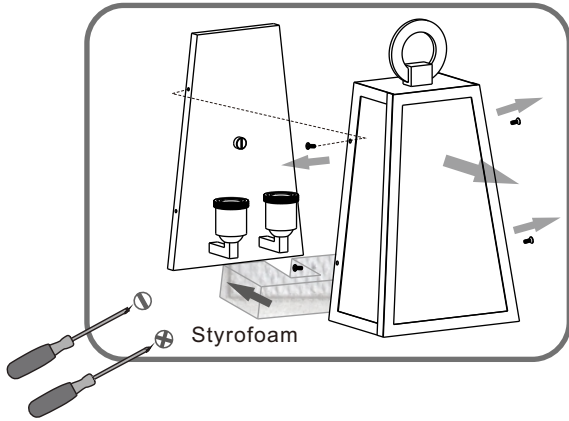


STEP 6

STEP 1

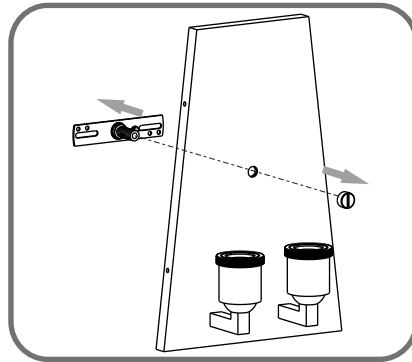
1

Remove backplate and styrofoam

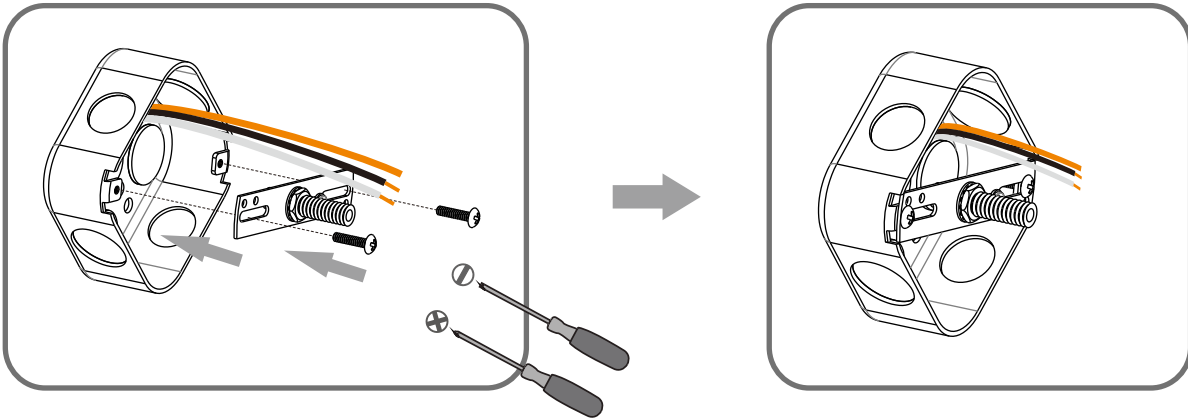


2

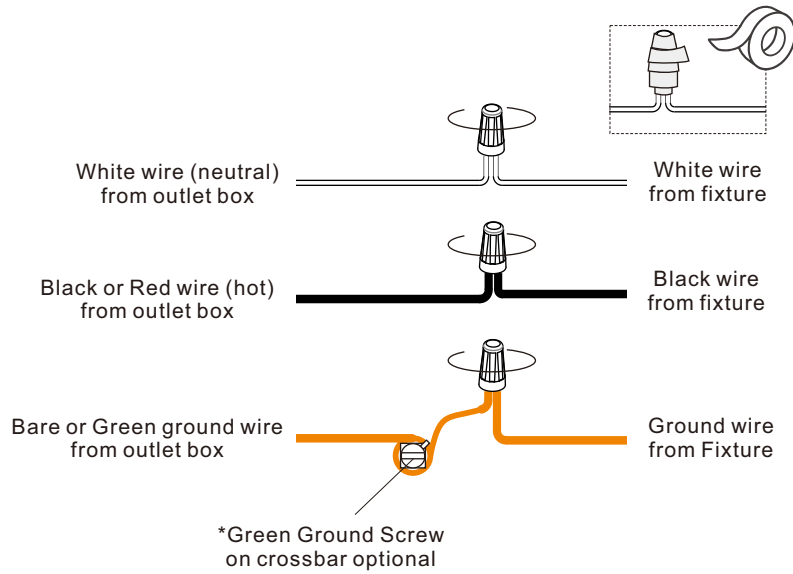
Remove crossbar assembly



STEP 2

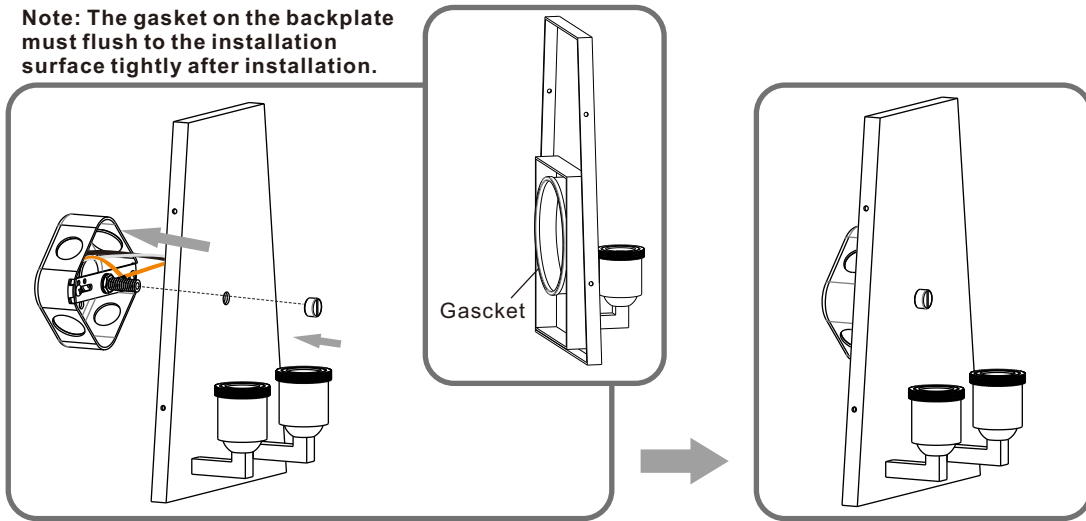


STEP 3

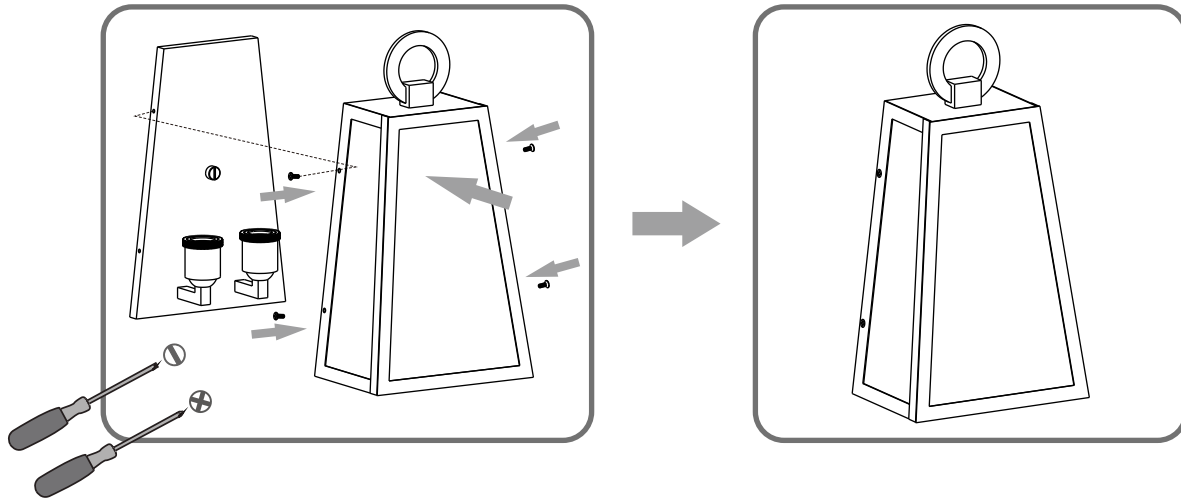


STEP 4

Note: The gasket on the backplate must flush to the installation surface tightly after installation.



STEP 5



STEP 6

