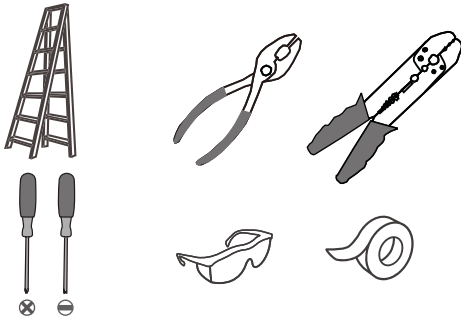
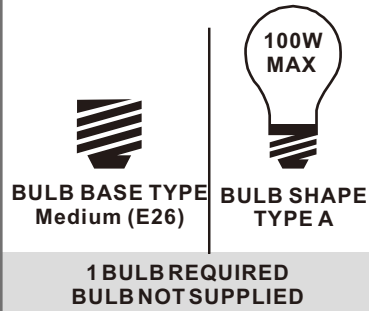


Tools Required



Light Source



Warnings and Cautions

Turn off the electricity at the circuit breaker before installation. Consult a licensed electrician if in doubt about installation.

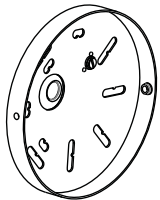
Turn off power to the fixture and allow the bulbs to cool before replacing.

Package Contents

Preparation: Identify and inspect all parts before beginning the installation.

Missing or damaged parts? Contact your original place of purchase.

PARTS BAG



A Inner Backplate
x 1



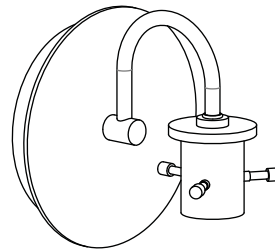
B Mounting Screw
x 2



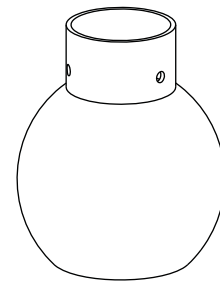
C Outlet Box Screw
x 2



D Wire Connector
x 3



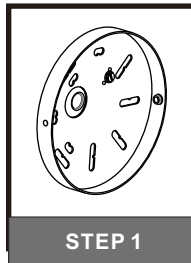
E Fixture Body
x 1



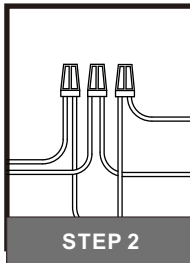
F Glass Shade
x 1

Table of Contents

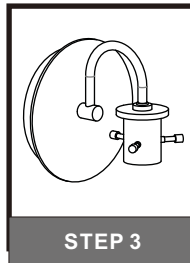
Inner Backplate



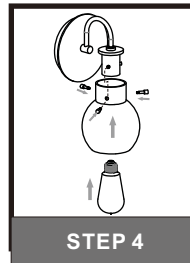
Wiring



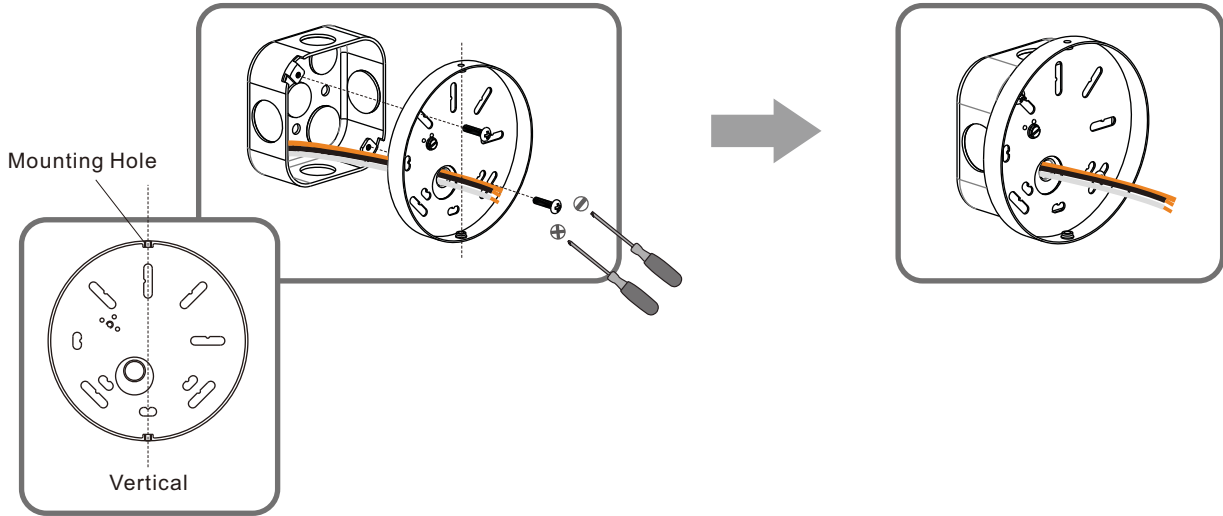
Fixture Body



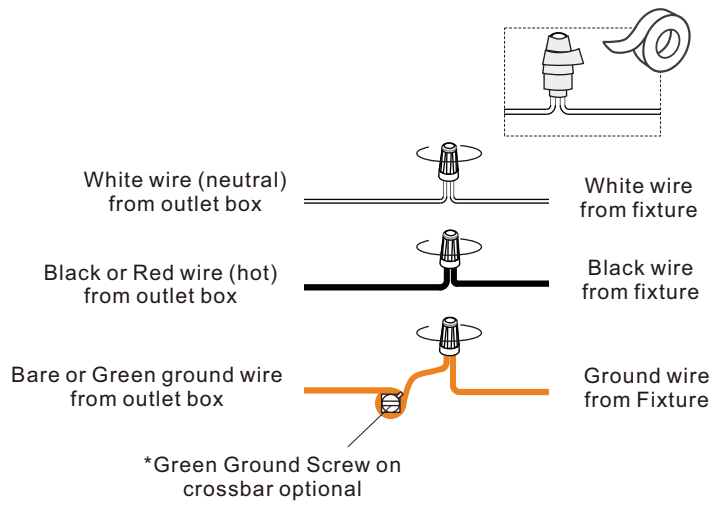
Glass and Bulb



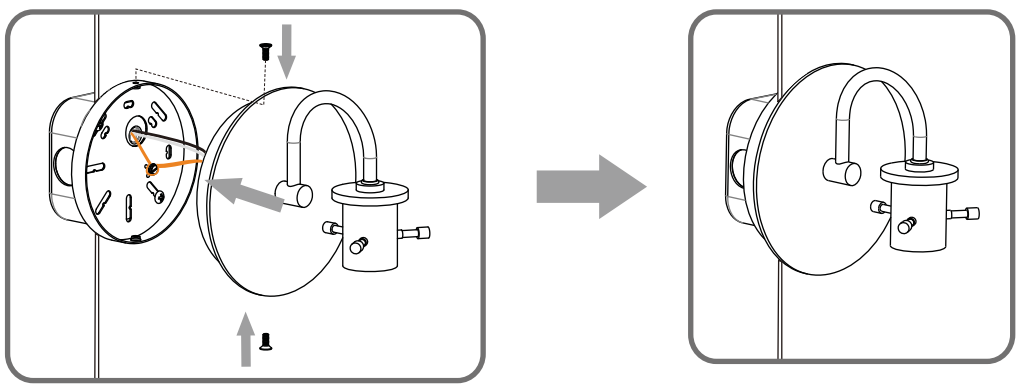
STEP 1



STEP 2



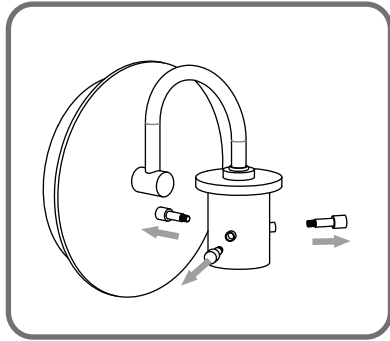
STEP 3



STEP 4

1

Remove Lock Screws



2

Install glass and bulb

