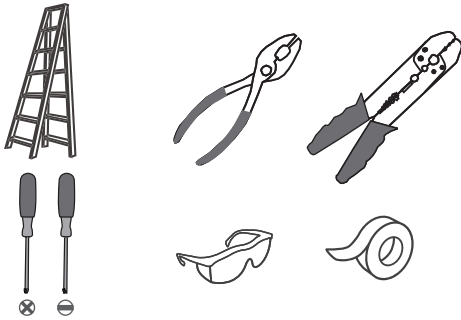
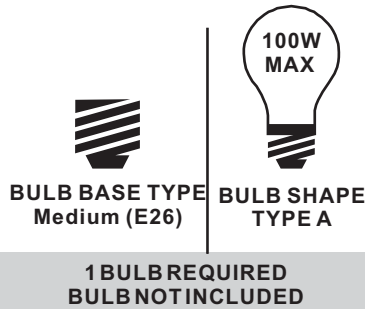


Tools Required



Light Source



**Fixture Height Adjustable
14.5" to 99.5"**

⚠ Warnings and Cautions

Turn off the electricity at the circuit breaker before installation. Consult a licensed electrician if in doubt about installation.

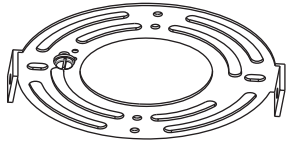
Turn off power to the fixture and allow the bulbs to cool before replacing.

Package Contents

Preparation: Identify and inspect all parts before beginning the installation.

Missing or damaged parts? Contact your original place of purchase.

PARTS BAG



A Crossbar
x 1



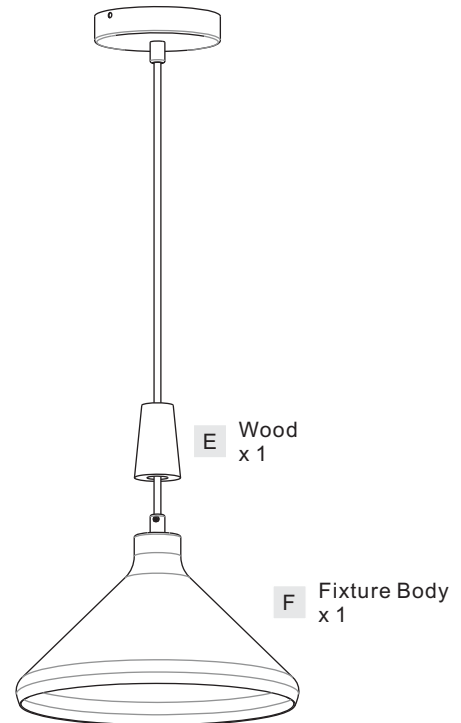
B Lock Screw
x 2



C Outlet Box Screw
x 2



D Wire Connector
x 3



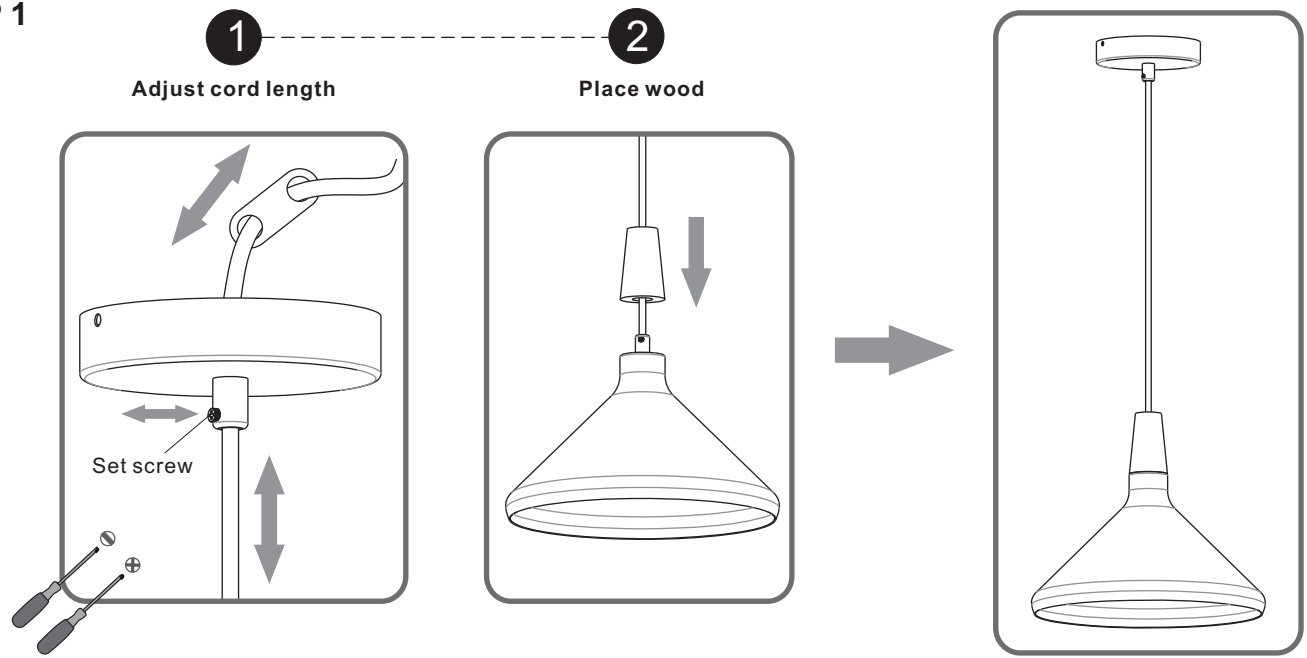
E Wood
x 1

F Fixture Body
x 1

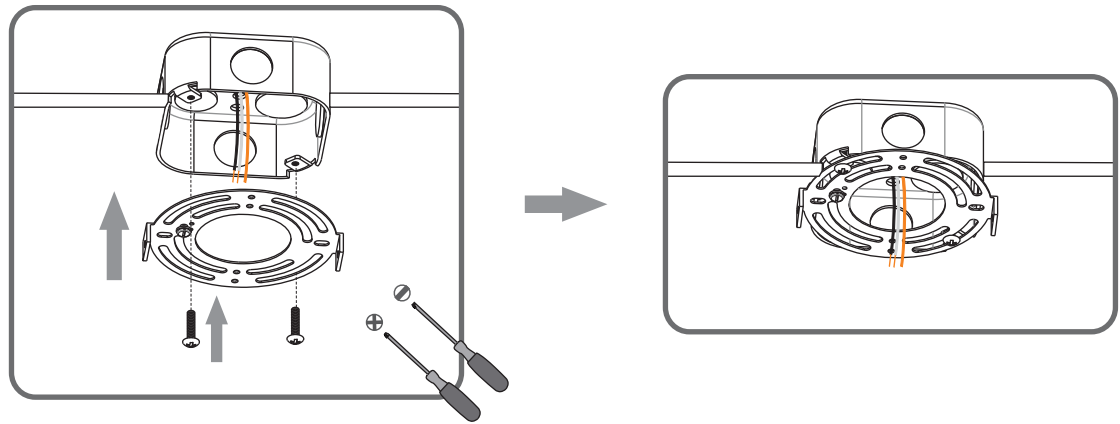
Table of Contents

Adjust Cord	Crossbar	Wiring	Ceiling Canopy	Bulb
STEP 1	STEP 2	STEP 3	STEP 4	STEP 5

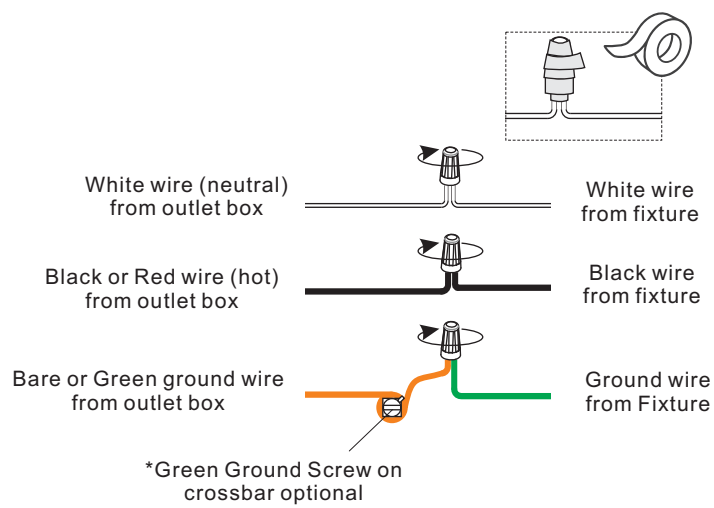
STEP 1



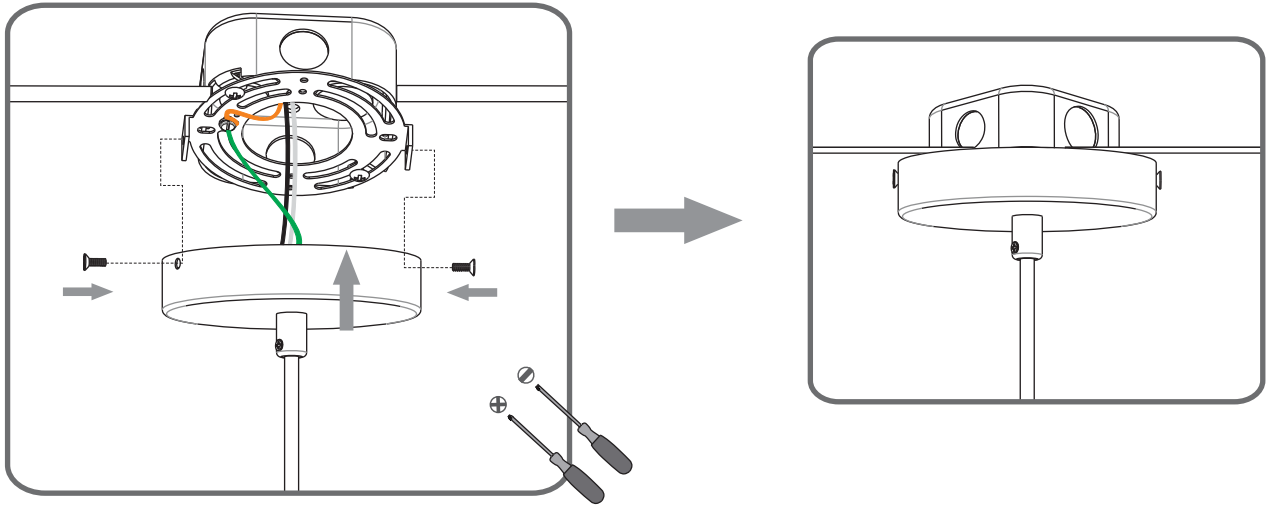
STEP 2



STEP 3



STEP 4



STEP 5

