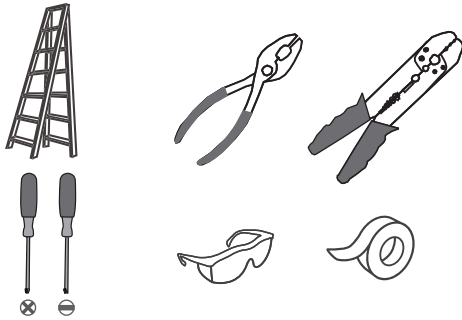
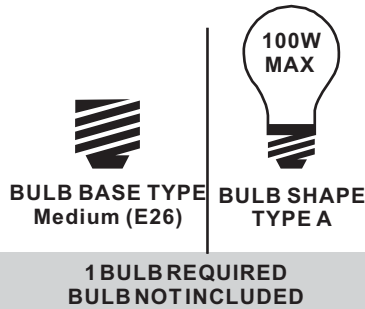


Tools Required



Light Source



**Fixture Height Adjustable
15.5" to 101.5"**

⚠ Warnings and Cautions

Turn off the electricity at the circuit breaker before installation. Consult a licensed electrician if in doubt about installation.

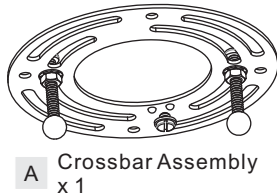
Turn off power to the fixture and allow the bulbs to cool before replacing.

Package Contents

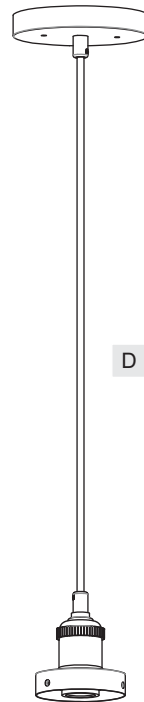
Preparation: Identify and inspect all parts before beginning the installation.

Missing or damaged parts? Contact your original place of purchase.

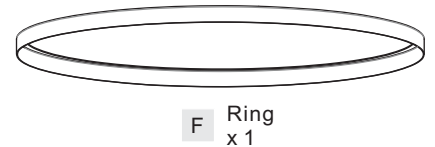
PARTS BAG



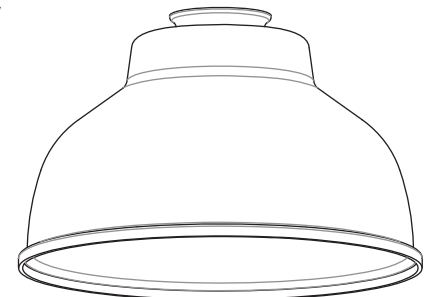
- B** Outlet Box Screw x 2
- C** Wire Connector x 3



- E** Lock Screw x 3



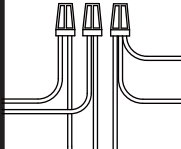
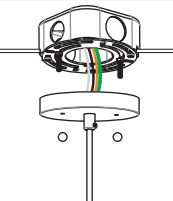




- F** Ring x 1

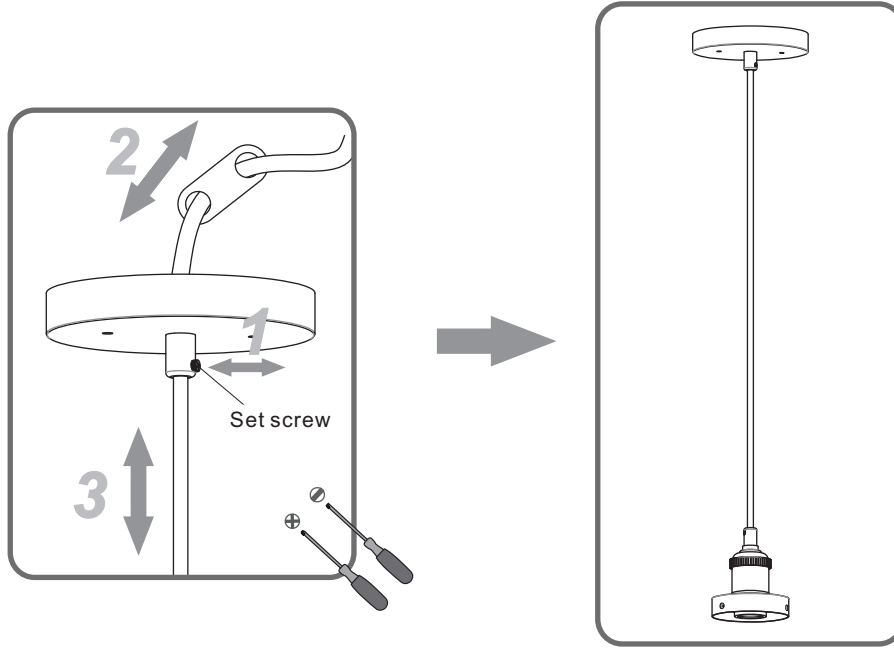


- G** Shade x 1

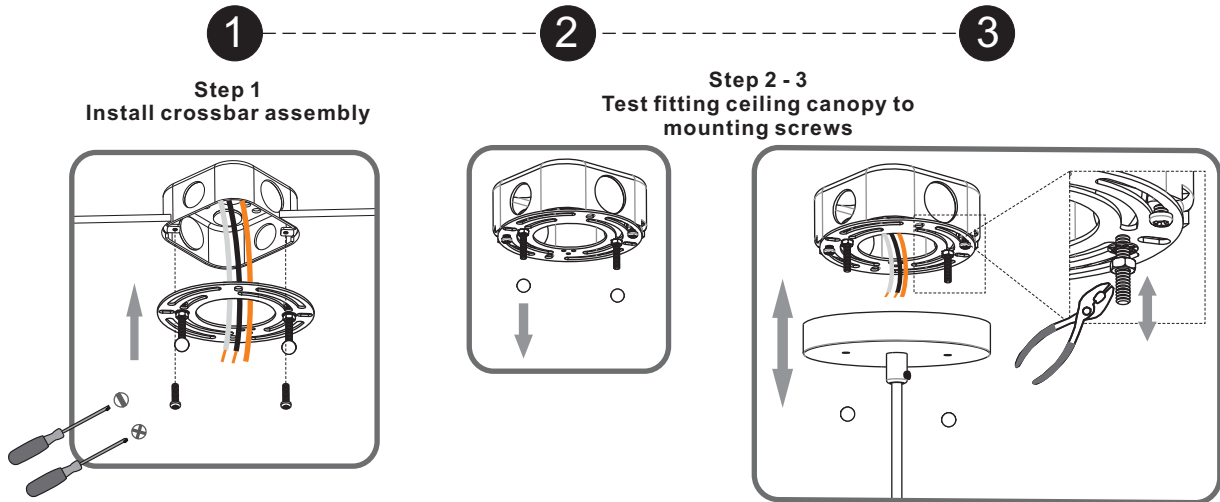
Table of Contents

Adjust Cord	Crossbar	Wiring	Ceiling Canopy	Ring & Shade	Bulb
					
STEP 1	STEP 2	STEP 3	STEP 4	STEP 5	STEP 6

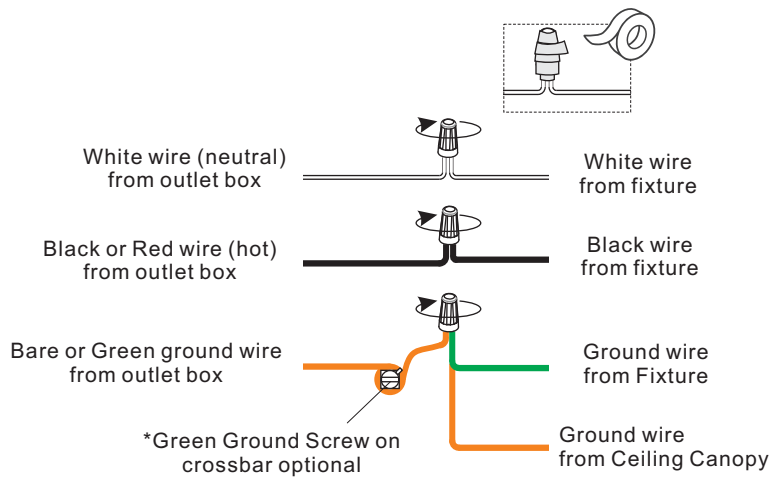
STEP 1



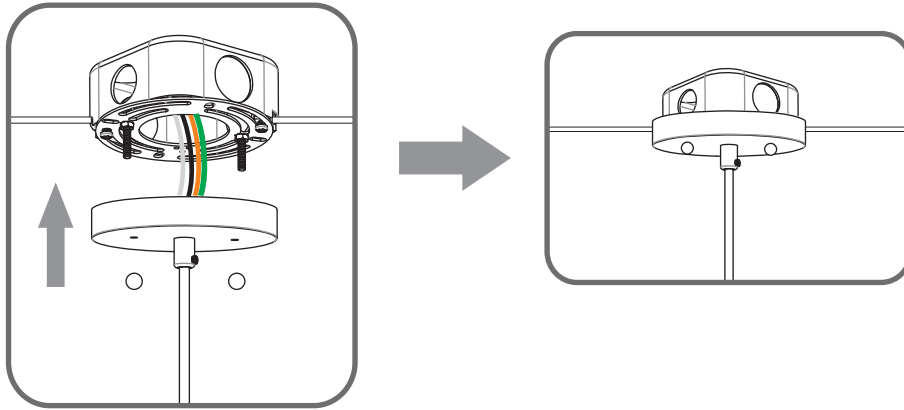
STEP 2



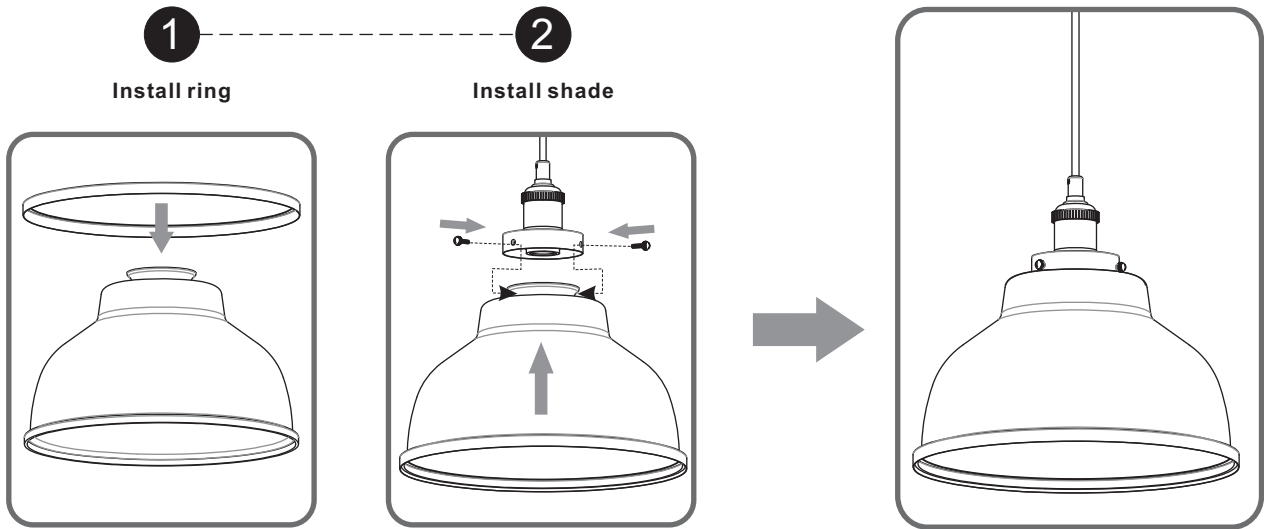
STEP 3



STEP 4



STEP 5



STEP 6

